



## Otonabee-South Monaghan an OSM Township

P.O. Box 70, 20 Third Street, Keene, Ontario K0L 2G0

Tel: (705) 295-6852 • Toll Free 705 area code only: (800) 999-4861 • Fax: (705) 295-6405  
info@osmtownship.ca • www.osmtownship.ca • Facebook & Twitter @OSMTownship

# NEWSLETTER

WINTER/SPRING 2023

## Interim Taxes Due Dates:

**Friday February 24, 2023**

**Friday April 28, 2023**

Please note that a 1.25% penalty applies on the 1st day of the month after the due date and on the 1st day of each subsequent month thereafter. Township staff do not have the authority to waive penalty.

**Payments** - Payment options are listed on the back of your tax bill and on our website at [www.osmtownship.ca/PayMyTaxes](http://www.osmtownship.ca/PayMyTaxes). Preauthorized payment plans are available for your convenience. You can find the sign-up form at [www.osmtownship.ca/PAP](http://www.osmtownship.ca/PAP) or at the Township office. When paying through internet or telebanking, use your roll number as your account number. If you have multiple properties, a separate payment is required for each roll number.

### Bill 68 – Changes to tax sale legislation

Please note that a tax arrears certificate can now be registered against a property if there are tax arrears owing on January 1 of the second year following that in which the taxes become owing. Property owners that have tax arrears are encouraged to make payment arrangements as soon as possible to avoid unwanted collection measures. If you have any questions, please contact the Director of Financial Services at 705-295-6852 Ext 211.



## Public Works

Equipped with plows, sand and salt, the Public Works Department clear your roads and sidewalks as quickly and effectively as possible. Routes are set so that one complete cycle can be done within a five to eight hour time period. There are strict laws that govern hours of work and hours of driving time, therefore careful planning is required for handling each snow/ice storm. The Public Works Department appreciates everyone's cooperation and patience during winter snow removal.



### Reminders:

- ✓ The Highway Traffic Act Section 170, Subsection 12, states *no person shall park or stand a vehicle on a highway in such a manner as to interfere with the movement of traffic or the clearing of snow from the highway*. Motorists who breach these winter parking regulations may be towed and will be responsible for all costs incurred
- ✓ The Highway Traffic Act Section 181, Part X states *no person shall deposit snow or ice on a roadway without permission in writing so to do from the Ministry or the road authority responsible for the maintenance of the road*

### Road Jurisdiction

Roads within the Township are maintained by different governing bodies. Typically, higher volume roads are owned and maintained by the Province or the County of Peterborough. Provincial highways and County roads will receive more frequent plowing and sanding than roads maintained by the Township. Township roads are maintained in accordance with the Township's Level of Service Policy. For review, this policy can be found at [www.osmtownship.ca/en/township-hall/Level-of-Service-Policy](http://www.osmtownship.ca/en/township-hall/Level-of-Service-Policy). The Township does not maintain private roads.

### Street Signs & Streetlights

If you notice a missing or damaged street sign or malfunctioning streetlight, please contact the Township Office at 705.295.6852 to report.

**Locates** - Call before you dig to locate underground infrastructure. Ontario One Call 1-800-400-2255 or visit on1call.com.

### 24-Hour Public Works Emergency Phone Number

24-Hour Public Works Emergency Phone Number "705-926-0223" this number is to be used only for roads or water related emergencies. All non-emergency Township road maintenance or drinking water related issues in Keene Heights, Crystal Springs or Elgeti Systems should continue to contact the Municipal Office (705) 295-6852 or the Public Works garage at (705) 745-3595.

## 2023 Budget

The **2023 Total Township Budget** is \$14,588,847 which includes operating costs of \$7,926,176, capital plan projects of \$4,918,199 and \$1,744,472 provision for reserves to fund future infrastructure replacement. The **2023 Total Township Tax Levy** is \$6,859,186 with the balance funded through grants, user fees, development charges, reserve transfers and other revenue.

This translates into a 2.79% increase in the Township tax rate. Each property is impacted differently based on the assessed value determined by the Municipal Property Assessment Corporation. Assessment increases are generally phased in over four years. For more information about assessment, please check out the MPAC website at [www.mpac.ca](http://www.mpac.ca). To find out more about your particular property assessment, register online at [www.aboutmyproperty.ca](http://www.aboutmyproperty.ca). A breakdown showing any assessment-related tax increase is provided on every tax bill.

## Building Department

The Building Department is available to discuss the details of your planned project, answer any questions and assist in completing required permit applications. Summer and fall are peak building times; therefore, inspection appointments must be booked 48 hours in advance.

Information regarding building requirements and permits can also be found on our website at [www.osmtownship.ca](http://www.osmtownship.ca).

It is recommended that you ask before you start work. This will save you time and money!

If you build without a permit, permit fees will be doubled. You also run the risk of having your construction project removed or having to make major modifications to bring it into compliance with the Ontario Building Code.

Building permits are required for the following:

- All new construction greater than 108 sq ft (10 sq m)
- All additions to structures regardless of the size
- All plumbing work
- Renovations, specifically any structural changes
- All swimming pools
- Decks (including replacement decks) - We recommend hiring a BCIN qualified designer to design your deck to ensure compliance with The Ontario Building Code and local Bylaws.



All additions, swimming pools, garages and accessory buildings require location approval in relation to the existing septic system from Peterborough Public Health prior to a building permit being issued. A Development Permit may be required from Otonabee Conservation of the Ministry of Transportation in certain areas.

Don't need a permit? Remember that your structure must still comply with zoning regulations, so check with the Director about any approvals you may need.

## Development Charges for 2023

The 2023 phased in Township Development Charges under By-Law No. 2020-60 are as follows:

Residential – All dwelling units \$10,429

Non-Residential – Commercial Sector \$4.25/square foot

Note: The Township also collects development charges for the County of Peterborough, PVNCCDSB and KPRDSP Educational Boards (not included in the above prices)

**Rabies Clinics** - Please check our website for updates at [www.osmtownship.ca](http://www.osmtownship.ca) or contact Dog Control at 705-939-6791

## Dog Tag Renewal

Dog tags are good for life but must be renewed annually. Invoices are mailed in January and are due upon receipt. New and replacement dog tags can only be purchased at the Township Office

## DEPARTMENTS

**Municipal Administration** - 705-295-6852 / 1-800-999-4861

Chief Administrative Officer, Greg Borduas Ext. 214

Clerk/Deputy CAO, Heather Scott Ext. 223

Director of Finance, Sara Flaherty Ext. 211

Deputy Treasurer/Office Manager, Jackie Fitzgerald Ext. 216

**Tax Inquiries** - 705-295-6852

Accounting and Tax Clerk, Shannon Neto Ext. 210

**Building & Planning Department** - 705-295-6852

Interim Director of Building Services (CBO), John Smallwood Ext. 222

Interim Junior Planner, Jessica Reid Ext. 232

Building Inspector, Steve Wigboldus Ext. 212

Building & Planning Assistant, Christine Zurosky Ext. 233

**Parks & Recreation Department** - 705-295-6862

Recreation, Parks and Facilities Manager, Mike Nelson

**Public Works Department** - 705-745-3595

Director of Public Works, Craig Brooks

**Dog Control** - 705-939-6791 / 1-866-709-6083

Dog Control Officer, Debra Haigh

**Fire and Emergency Services** - 705-295-6880

Fire Chief/CEMC, Chuck Parsons Ext. 217

Fire Admin/Public Education/Fire Prevention Officer, Cara Wood Ext. 215

## COUNCIL MEMBERS

**Reeve** - Joe Taylor 705-295-4886, jtaylor@osmtownship.ca

**Deputy Reeve** - Bonnie Clark 705-295-4434, bclark@osmtownship.ca

**Councillor at Large** - Mark Allen 705-295-1544, mallen@osmtownship.ca

**Councillor for Otonabee Ward** - Nick Powers 705-875-8245, npowers@osmtownship.ca

**Councillor for South Monaghan Ward** - Terry Holmes 705-939-6754, tholmes@osmtownship.ca



## Garbage and Recycling

**OSM Transfer Station** - 1594 Drummond Line, 705-749-2331

Hours: Mon. & Fri. 1-6 pm / Wed. 9 am - 6 pm / Sat. 9 am - 3 pm

### Garbage Collection Inquiries/Missed Collection

Waste Connections Canada – 705-742-4268 or

[Marilyn.jewer@wasteconnections.com](mailto:Marilyn.jewer@wasteconnections.com) Or

[Stephen.bye@wasteconnections.com](mailto:Stephen.bye@wasteconnections.com)

**Clear Garbage Bag Program.** Thank all residents for helping to make this program a continued success. The Township is very pleased to report that since the launch of the program there has been a significant decline in waste generation and a huge increase in recycling. Garbage can be left at the curb or can be taken to the Drummond Line Transfer Station for a fee in the following ways:

1) in a clear bag in a garbage container; 2) in a clear bag; or 3) in an opaque small grocery size privacy bag to shield private items. **Garbage must be at the road before 7:00am to avoid missing collection.** For clear bag program details please see the Township website [www.osmtownship.ca](http://www.osmtownship.ca),

**Peterborough County provides recycling services to all residents.** The County of Peterborough website ([www.ptbocounty.ca/recycling](http://www.ptbocounty.ca/recycling)) has a Searchable Waste Portal to find information regarding recycling and garbage collection all in one place. On this site you will find a printable blue box sort guide that will assist you in finding the appropriate place for your recyclables.

**Recycling Program** - County of Peterborough

705-775-2737 or [waste@ptbocounty.ca](mailto:waste@ptbocounty.ca)

For missed Collection call Emterra at 705-742-3139

**Remember the Big Three when recycling:**

1. **Have your blue boxes to the road by 7am.**

2. Sort your materials into 2 boxes, Containers and Papers.

✓ Use as many boxes as needed, as long as Containers, and Papers are in separate boxes.

3. Keep recycling loose in Blue Boxes.

✓ Bagged recycling will not be collected.

**Special Provisions for Individuals with a Medical Condition**

The Application for Medical (Non-Hazardous) Waste Exception – Curbside Waste Collection can be found at [www.osmtownship.ca/en/living-here/Garbage-and-Recycling](http://www.osmtownship.ca/en/living-here/Garbage-and-Recycling).



## Fire Services

### 2023 Burn Permits

Please be advised that OSM has moved to an online burn permitting system effective January 1, 2023. Owners of property in OSM, will need to create an account, and request the burn permit via the online system found at: <https://osm.burnpermits.com>. An email address will be required for opening an account. If you have trouble with the system or have questions about creating your account, please contact Cara Wood at the Fire Department Administration Office: 705-295-6880 Ext. 215 or by email: [cwood@osmtownship.ca](mailto:cwood@osmtownship.ca)

An updated burning by-law has been adopted: **2022-50:**

**Regulations for the Setting of Open-Air Fires.** A copy of the by-law can be found within the burn permit system and on the Township website, navigating to Township Hall, then By-Laws.

Burn Permits are still not required for campfires or recreational fires. See the new by-law for details on rules for campfires and recreational types of fires. Burning in a barrel is not permitted in OSM.

### Emergency Preparedness

Emergency Preparedness Week runs the first full week in May. Ensure you and your family are prepared for at least the first 72 hours of any emergency.

**For more information on specific risks and how to prepare for emergencies, visit:** <https://www.getprepared.gc.ca/>



### Flood Watch

Flooding conditions along the Otonabee River and surrounding tributaries has become an annual winter/spring occurrence in OSM.

Be reminded that the Otonabee Region Conservation Authority (ORCA) is the Flood Watch agency for this Municipality. Flood Watch information can be found at [www.otonabeeconservation.com](http://www.otonabeeconservation.com) or by contacting the ORCA Flood Watch Hotline at 705-745-5791 Ext. 228

Residents living in these flood prone areas are responsible for monitoring the conditions and being prepared to take immediate action if necessary, for the protection of life and valued property.

### Heating Device Maintenance

Cleaning and maintenance of chimneys and wood heating devices is important to ensure their proper operation.

As we experience warmer temperatures moving closer to spring, there is an increased risk of creosote buildup. A blocked chimney will not ventilate properly and can cause carbon monoxide to draft into your home.

Make sure all heating appliances are properly cleaned and maintained on a regular basis to ensure safe operation.

## Fire Services -continued

### Smoke and Carbon Monoxide Alarms

Only Working Alarms save lives! Don't forget that smoke and carbon monoxide alarms do not last forever. Follow manufacturer's instructions on alarm life and required replacement. Most smoke alarms need replaced after 10 years, and Carbon Monoxide alarms after 7 years.

### Beat the Silent Killer

Make sure **YOUR** household is safe from carbon monoxide poisoning.

Ensure all fuel-burning appliances and vents in your home are inspected annually. Find a registered contractor at [COSafety.ca](http://COSafety.ca)



Install and regularly test carbon monoxide alarms

**OVER 65%**

of all carbon monoxide deaths and injuries in Ontario occur in homes

Symptoms of carbon monoxide poisoning are similar to the flu without the fever

It is often referred to as The Silent Killer



No Odour



No Colour



No Taste

Many Ontario homes have on average **4-6 fuel-burning appliances** that produce carbon monoxide



Fireplace



Portable Fuel Heater



Dryer



Furnace



Stove



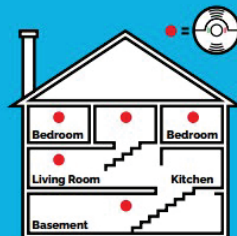
Water Heater



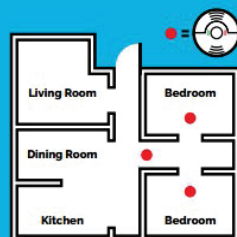
Portable Fuel Fired Generator

[COSafety.ca](http://COSafety.ca)  
[ontario.ca/firemarshal](http://ontario.ca/firemarshal)

## Smoke Alarms Save Lives!



Multi-storey



Single-storey

### Install Smoke Alarms:

- On **every storey** of your home (including basements).
- Outside **all sleeping areas**.
- For added protection, install smoke alarms in **all bedrooms**.

### Remember:

- Test all smoke alarms **every month**.
- Change the batteries at least **once a year**.
- Smoke alarms don't last forever. Replace them after **10 years**, according to manufacturer's instructions.

For more information contact your **local fire department**.

Township of Otonabee-South Monaghan  
Department of Fire and Emergency Services  
705-295-6880



Office of the Fire Marshal  
[ontario.ca/firemarshal](http://ontario.ca/firemarshal)  
[@onfiremarshal](https://twitter.com/onfiremarshal)

## Parks, Recreation and Facilities

### Otonabee Memorial Community Centre/Sports Fields/Facilities

Otonabee South Monaghan Township offers banquet facilities, ice surfaces (hockey and curling), and baseball diamonds for rent.

To view availability and complete an online booking request visit <https://app.booking.ca/osmtownshippub/index.asp> to set up your account. If you have previously had rentals with our Municipality then you will already have an account and can contact the Recreation Department by phone or email to find out login information.

705-295-6862 or [mnelson@osmtownship.ca](mailto:mnelson@osmtownship.ca).

### Winter and Spring Events and Updates:

- ✓ Keene Lions Club Bingo – Wednesdays beginning @ 6:30 pm – Doors open @ 5:30pm!
- ✓ Public Skating – Thursdays and Sundays from 3:00pm – 4:00pm
- ✓ Seniors Skating – Tuesdays @ 10:00am – 11:00am
- ✓ Men's, Women's and Mixed 3-Pitch Leagues – registration takes place in the spring
- ✓ Pinecrest Park – playground equipment is scheduled to be installed in June 2023 in Pinecrest Park located in Keene

**Events and rental details can also be found at**

[www.osmtownship.ca/en/things-to-do/Facilitiesand-Community-Centres](http://www.osmtownship.ca/en/things-to-do/Facilitiesand-Community-Centres)

